





**HEAD OFFICE & SHOWROOM**

Incek Bulvarı No: 98  
06805 Çankaya Ankara Turkey  
+90 312 441 70 42

**FACTORY & TECHNOLOGY CENTER**

Cubuk Yolu 8. Km Güldarpi Mahallesi  
06760 Esenboğa Ankara Turkey  
+90 312 827 15 90

**İSTANBUL OFFICE**

+90 212 465 30 82

**FRANKFURT OFFICE**

+49 172 527 70 89

info@xceptiondoors.com  
xceptiondoors@pimeksmbh.de

## About Us

Created by the expertise and know-how we have gained in aluminum, steel and stainless steel joinery systems since 1993, Xception Doors has been designed to open its doors to maximum performance and utmost quality for demanding markets. Xception Doors are proudly manufactured in our own integrated plant, thoroughly from steel to aluminum and raw material to finished product, in order to offer you superior elegance, comfort and security bundled with uncompromised characteristics.



## Design

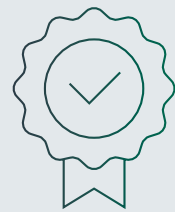
Xception Doors has been created by the expertise and know-how gained over the years plus the innovative approach by the intensive R&D efforts to meet your expectations of stylistic aesthetics along with energy efficiency, water tightness, air tightness and strength against impacts and high temperature. The extraordinary careful work of the specialist designers and the designs created as a result of long evaluations make the Xception Doors Collection really exceptional and over the standards.

Along with the Xception Doors Collections, offered in four main groups, our design studio provides custom model designs specially created for special requirements to submit to the manufacturing plant upon approval from customer. All doors are transferred to the manufacturing plant only after customer approval of the manufacturing drawings.





## A New Approach to "Entry Systems"



### Quality

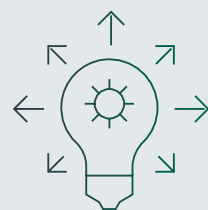
Crafting our doors with only the best metals, gaskets and hardware, XCEPTION delivers the highest quality.



### Performance

Tested in accordance with EN norms and has air permeability, Watertightness, Wind load resistance, Burglar resistance and Impact resistance values.

Designed to withstand hurricane force wind and rain, and HVHZ tests are under construction. You can be sure your door will protect your home for years to come.



### Innovation

Unlike other metal doors, all Xception Doors come standard with innovative thermal barrier technology that offers great energy performance in all climates.



### Security

Standard laminated glass gives all of our doors superior protection from intruders and extra piece of mind for the safety of your family.

## Welcome to "Xception Doors"



### AI Collection Exceptional Gems

Gemstones are hidden treasures of the World offered us by the nature. Each gemstone is created by a different combination of elements and presents unique features, which has given us the inspiration to create the AI Collection. The fascinating treasures of the nature is reinterpreted in our designs.



### Designer Collection Exceptional Forests

Each forest on the earth has a special spirit that reflects a unique feeling which makes it exceptional and distinctive. This is the intrinsic reality that inspired us to create our Designer Collection. Taking the characteristic design in the nature as sample, we have regenerated the unique spirit of forests.



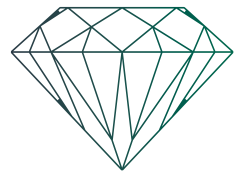
### Steel Collection Exceptional Places

Each single piece of land shaped on the face of the earth is quite a sight with its extraordinary features. This is the why we call them as works of art that reflects the power of time. The natural structures in different parts of the world were our source of inspiration in creating The Steel Collection. Our motivation was to bring those glamorous structures to your home range.



### Architectural Collection Exceptional Stars

Each star has its own story. Out of the countless stars floating in the sky, no one is the same with another; but they have a common feature: they all have an attractive light. The fascinating nature of the stars inspired us to create The Architectural Collection. So, we entrusted the exceptional spirit of stars that carry their lights to furthestmost distances.



## AI-Aluminum Iron-Collection

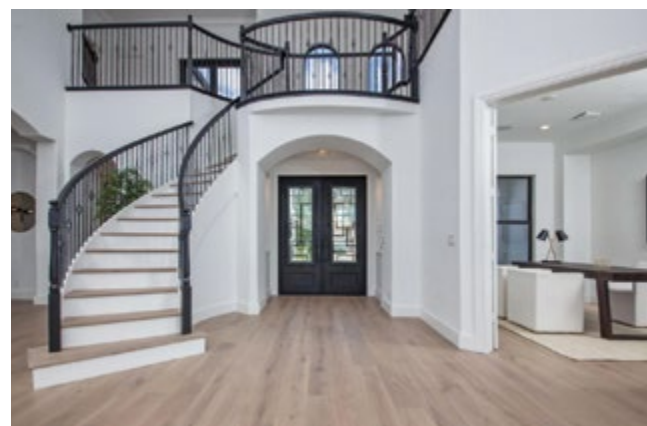
European Engineering - Built to Last

Our AI Collection was engineered from the ground up using custom-designed profiles to provide superior strength and performance.

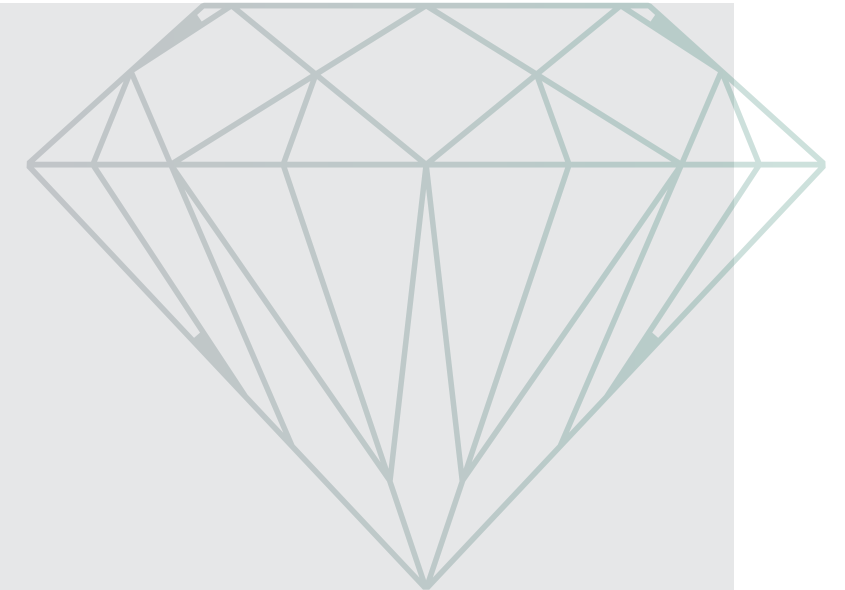
Assembled with the highest-quality steel and aluminum, this door will stand the test of time. Stringent requirements for water infiltration, wind load, protection from intruders and impact resistance have been met so that you can be sure you have the best entrance door on the market protecting your home.

Premium features such as an operable window with a multi-point lock add luxury and security to your entryway. Choose from any of our modern or traditional scroll designs or dream up something unique to give your home a truly custom look.

All doors come thermally broken for superb Energy Star® performance in even the harshest climates.



Standard 3-point lock for all doors





Designs



Diamond



Emerald



Ruby



Alexandrite



Black Opal



Tanzanite



Jadeite



Sapphire



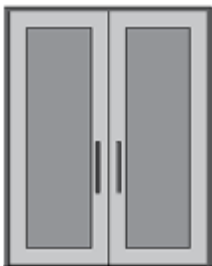
\*Having capability of manufacturing custom design doors as per customer's requirements in addition to standard models.

AI Door Options  
European Engineering - Built to Last

Type



3/4 Lite



Full Lite

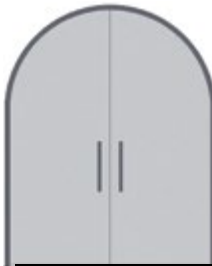
Shape



Flat Top



Eyebrow



Full Arch

\*Optional operable glass panel. \*Single door option also possible for all models.

Finish



Pearl



Titanium



Bronze



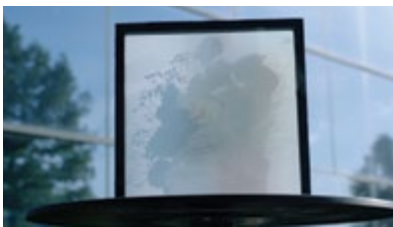
Gunmetal



Black

\*Electrostatic powder coated and resistant to severe weather conditions.

Glass



Satin\*



Aquatex



Clear Low-E\*

\*Glass can be upgraded to SNX60 to achieve energy star rating.



Handle Set



Whitaker



Valor



Vulcan



Freya



Wayland



Davenport





## Designer Collection

Distinctive Style with Infinite Possibilities

The Designer Collection features a laser cut sheet applied directly to the glass to create a stunning modern entryway for your home.

Custom stainless steel pull handles compliment any design and add the perfect finishing touch.

Built with aircraft grade aluminum, this door offers unparalleled strength and beauty.

For a more customized look, choose the Daintree door and add your street address, family name, or more.



Standard 3-point lock for all doors



## Designs



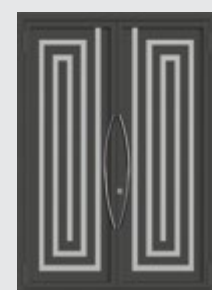
Black Forest



Monteverde



Daintree



Amazon



Sagano



Sumatra



Hallerbos



*\*Having capability of manufacturing custom design doors as per customer's requirements in addition to standard models.*

## Designer Door Options

Distinctive Style with Infinite Possibilities

### Shape



Flat Top

*\*Single door option also possible for all models.*

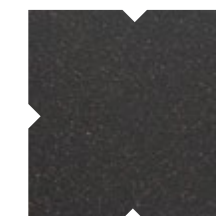
### Finish



Pearl



Titanium



Bronze



Gunmetal



Black

*\*Electrostatic powder coated and resistant to severe weather conditions.*

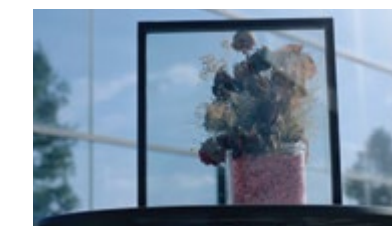
### Glass



Satin\*



Aquatex



Clear Low-E\*

*\*Glass can be upgraded to SNX60 to achieve energy star rating.*



### Handle Set



Linear



Degree



Metro



Miter



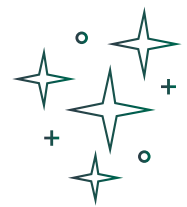
Circular



Octagon

*\*Having capability of manufacturing custom design handles as per customer's request*





## Steel Collection

Next Generation Steel Doors

Steel Collection doors are built with Swiss-engineered steel profiles to produce elegant doors with minimal sightlines and all the strength steel provides.

These doors create a stunning modern look for any home and provide more glass area than any other entrance door on the market.

Stainless steel handles compliment any design and add the perfect finishing touch.

These doors also look great on interior passageways, emphasizing the attractive modern look of glass and steel in your whole home.

Swiss Steel Profile Construction

Maximum Glass Area

Stainless Steel Handle

High-Grade Mortise Lock

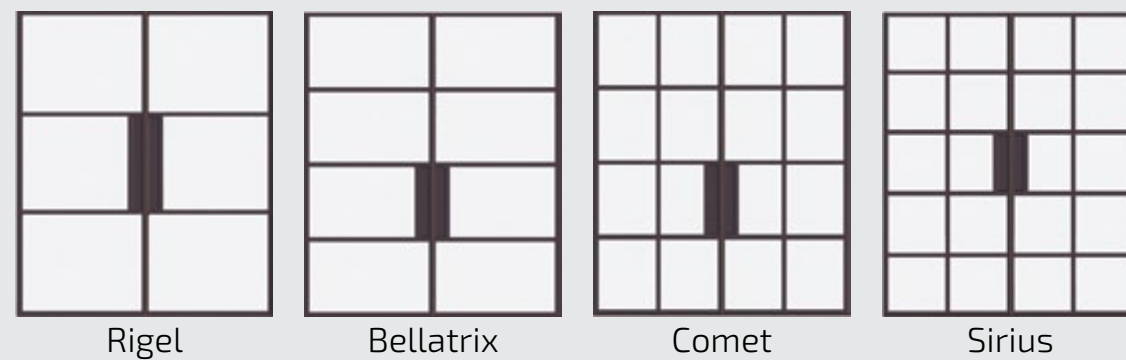


Special Lock





## Designs

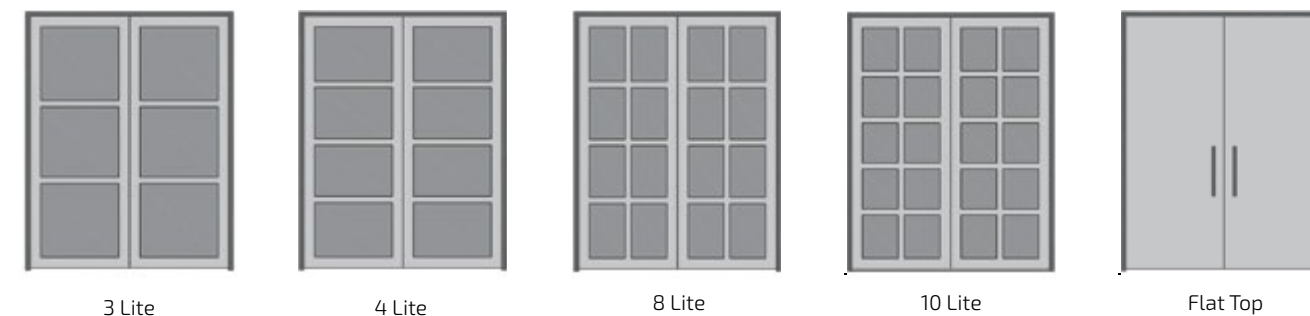


\* Having capability of manufacturing custom design doors as per customer's requirements in addition to standard models.  
\* 2 options are available as thermally broken and non thermally broken.

## Steel Door Options

Next Generation Steel Doors

### Type



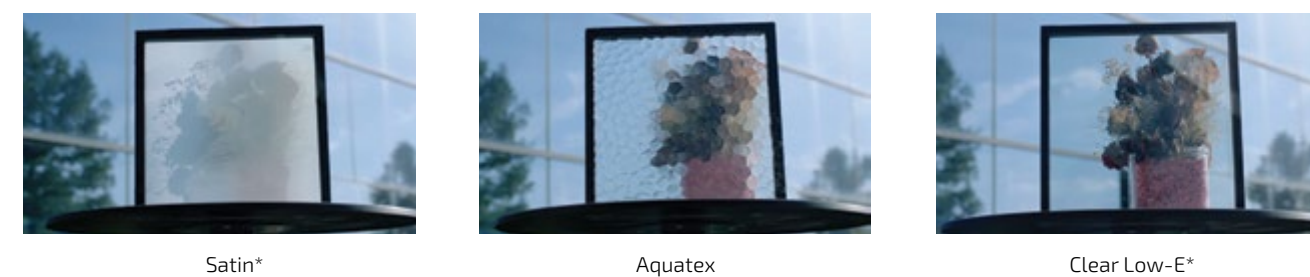
\*Single door option also possible for all models.

### Finish



\*Coated with wet paint and resistant to severe weather conditions.

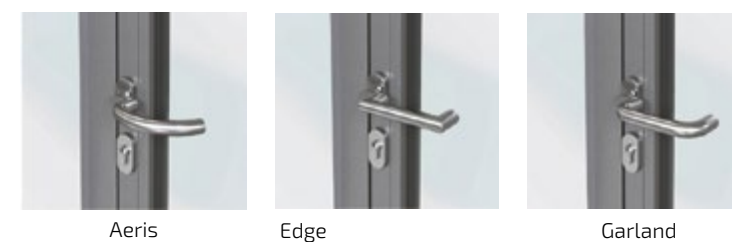
### Glass



\*Glass can be upgraded to SNX60 to achieve energy star rating.

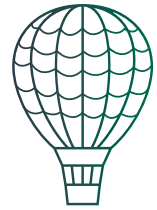


### Handle Set



\*Stainless steel handles.





## Architectural Collection

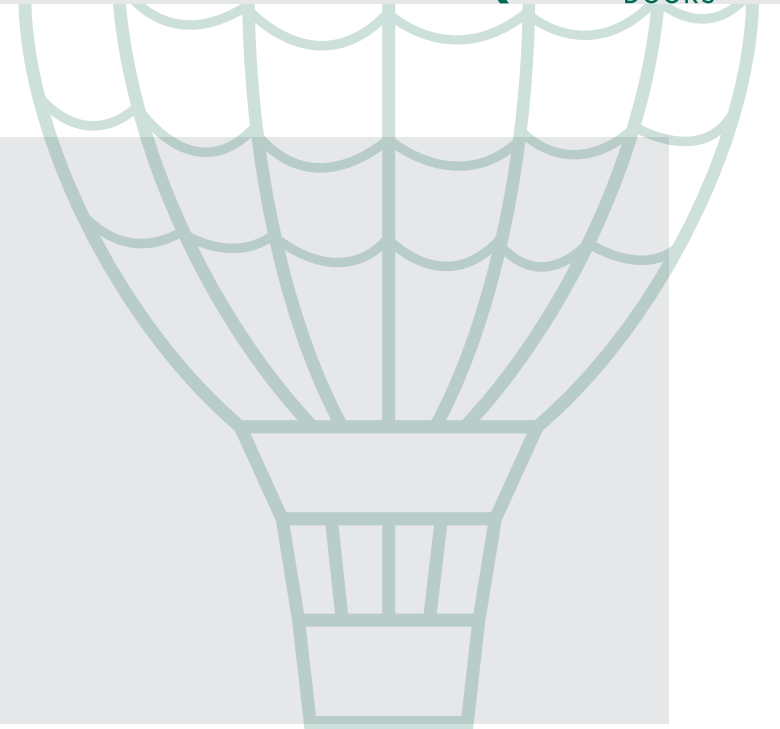
Durability in Design

The Architectural Collection is built with advanced laminate technology that has been time tested in exterior facade applications.

The stone and woodgrain textures offer an authentic feel you won't find in any other entry door.

Each door features scratch-resistant panels that will withstand the rigors of normal use. In addition, UV inhibitors protect the Architectural Collection from fading, ensuring your entryway will retain its unique beauty for years to come.

Pair with our custom-made stainless steel handles to give your home an exotic look that will get your neighbors talking.



Standard 3-point lock for all doors



## Designs



Grand Canyon



Niagara



Sahra



Alps



Cappadocia



*\*Having capability of manufacturing custom design doors as per customer's requirements in addition to standard models.*

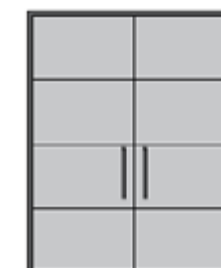
## Architectural Door Options

*Durability in Design*

### Panels



3 Panel



4 Panel



5 Panel



Flat Top

*\*Single door option also possible for all models.*

### Finish



Pearl



Titanium



Bronze



Gunmetal



Black

*\*Aluminum frames are electrostatic powdercoated and resistant to severe weather conditions.*

*\*Any RAL color can be applied upon customer request.*

### Handle Set



Linear



Degree



Metro



Miter



Circular



Octagon

*\*Having capability of manufacturing custom design handles as per customer's request*



## Standard 3-Point Lock For All Doors

Driven by Quality



### 3-point lock system:

Secures the door in three locations along the jamb

Tighter seals, even for large doors, which improves energy efficiency

Provides superior protection against breakin's

Improved protection against inclement weather

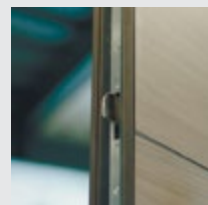
### Xception's 3-point lock systems features:

Powerful, key driven technology

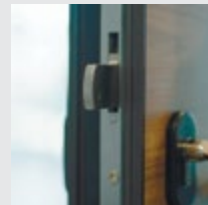
100% machine-cut hardware

5-year guarantee

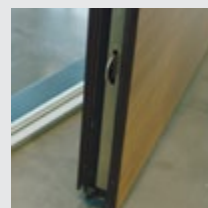
1



2

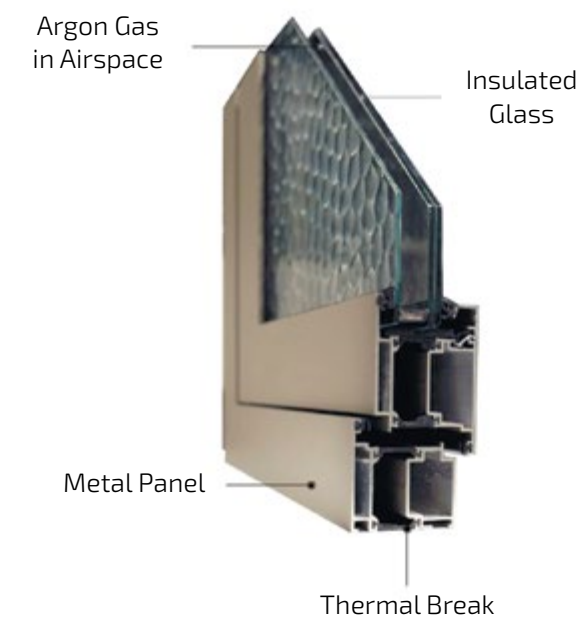


3



## Advanced Thermal Barrier Technology

A Standard Feature for all Xception Entry Doors



### Key Benefits

Cuts heat loss

Repels cold transmission

Combats condensation and frost

Dampens vibrations for improved sound insulation.

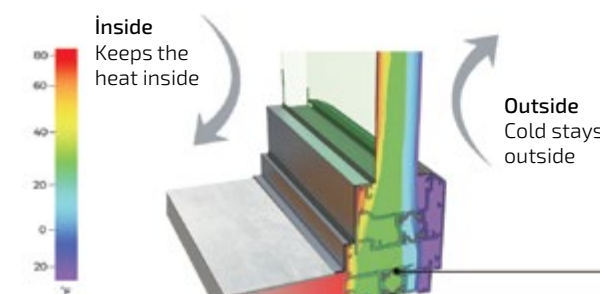
Metal doors have a reputation for poor thermal performance, leading to increased energy costs for your home, or even frost on the inside of your door in cold climates.

Xception Entry Doors has solved this issue by offering advanced thermal barrier technology in all of our doors as a standard feature. Now you can have the strength and appeal of a metal door without sacrificing energy performance.



Upgrade to SNX60 Low-E glass to meet Energy Star® guidelines.

### Combats Condensation and Frost



NFRC-Certified products are independently tested, certified, and labeled to help you make the best purchase decision for your needs



**The Thermal Barrier** insulates the frame, keeping the cold out and the heat in



### All Doors Feature:

Durable Powder Coat Finish

Adjustable Hinges

Machine-Cut Components

Advanced Thermal Barrier Technology

### Our Entry Doors Offer:

24 Hours of Energy Efficiency

Noise Reduction

Extreme Weather Protection

Burglary Protection

### Impact Entry Doors with Premium Standard Options

Impact Rated

5-Year Warranty

Exclusive to Authorized Dealers



